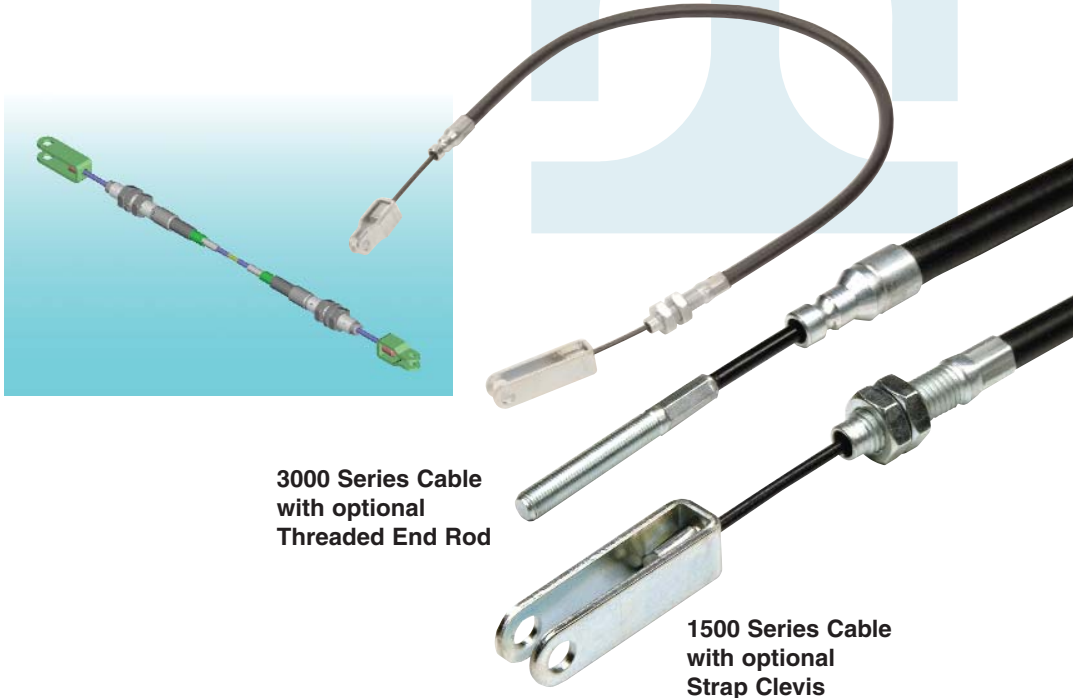


# Pull-Only Brake

## 1500 & 3000 Control Cable Assembly



**3000 Series Cable  
with optional  
Threaded End Rod**

**1500 Series Cable  
with optional  
Strap Clevis**

### **Pull-Only Industrial**

A flexible control designed to transmit pull motion between two mechanical devices without the use of rods, bellcranks, or other rigid mechanical linkage. Pull controls are specifically designed for applications which require a high load capability and low deflection. The cable often used for operating a vehicle parking brake is a typical example. Simple to install and easy to maintain, our versatile pull controls are found on many types of mechanical equipment.



#### **Description:**

1500 Pull-Only Brake  
3000 Pull-Only Brake  
Industrial Control  
Cable Assembly

#### **Applications:**

- Park brakes
- Pull-pull cable systems

#### **Features:**

- High load capacity  
1500 allows up to  
1500lb loads
- Low deflection  
3000 allows up to  
3000lb loads
- Installed bend radius  
down to 5"

#### **Other Related Products:**

- Hand Control Brake
- Clutch



**TUTHILL  
Controls Group**

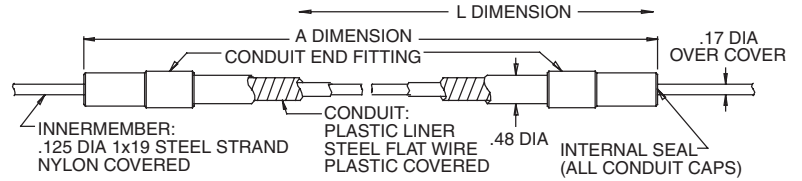
*Linking Motion & Control...*

The Tuthill Solution

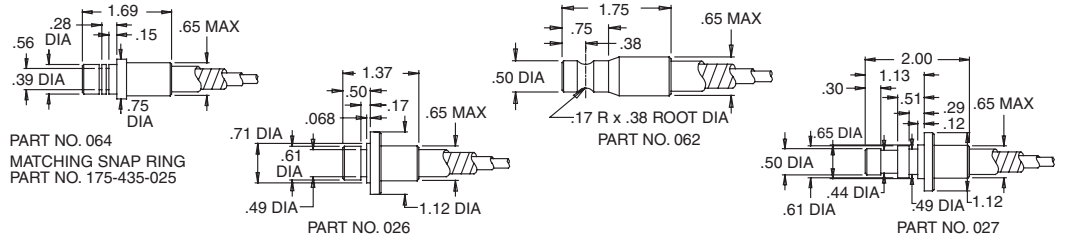
# Pull-Only Brake

1500lb Series

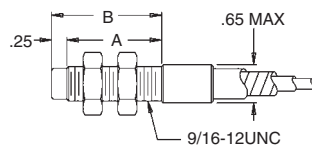
Ultimate Load: 1500lb  
Minimum Bend Radius: 5"



## Grooved End Fittings

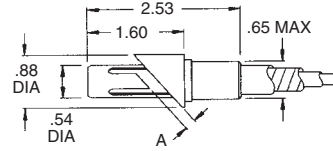


## Threaded End Fittings



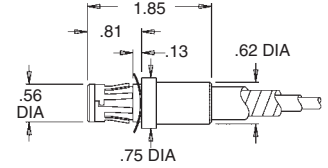
PART NO.	A	B
060	1.4	2.7
061	2.0	3.4

## 48° Clip-Lock End Fitting



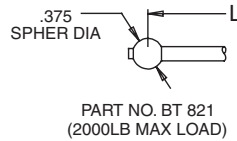
PART NO.	A
066	.13
067	.20

## Clip-Lock End Fitting



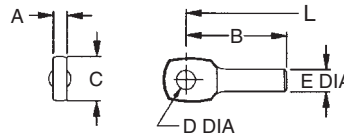
PART NO. 065

## Ball End



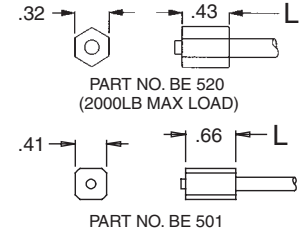
PART NO. BT 821  
(2000LB MAX LOAD)

## Eye End



PART NO.	A	B	C	D	E
157-047-000	.235	1.81	.75	.323	.375
EE9158	.240	1.60	.75	.500	.437

## Cable Stop

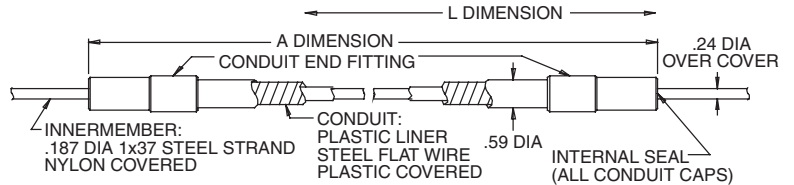


PART NO. BE 520  
(2000LB MAX LOAD)

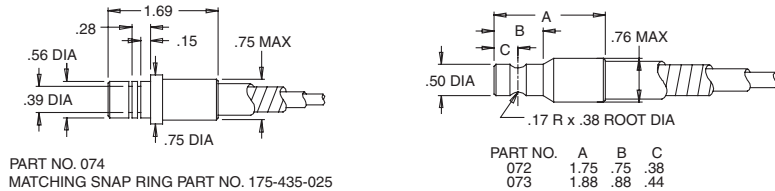
PART NO. BE 501

3000lb Series

Ultimate Load: 3000lb  
Minimum Bend Radius: 7"



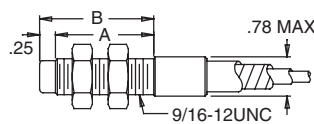
## Grooved End Fittings



PART NO. 074  
MATCHING SNAP RING PART NO. 175-435-025

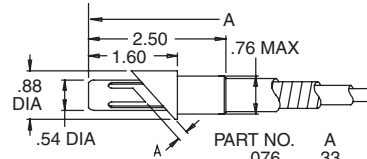
PART NO.	A	B	C
072	1.75	.75	.38
073	1.88	.88	.44

## Threaded End Fittings



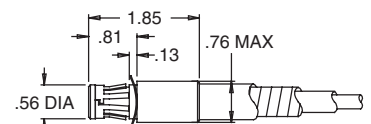
PART NO.	A	B
070	1.4	2.7
071	2.0	3.3

## 48° Clip-Lock End Fitting



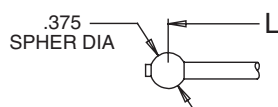
PART NO.	A
076	.33
077	.20

## Clip-Lock End Fitting



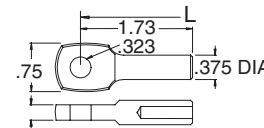
PART NO. 075  
FOR .125 AND .187 THK MATERIAL

## Ball End



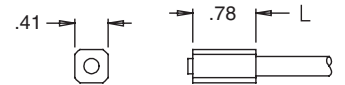
PART NO. BT 822  
(2000LB MAX LOAD)

## Eye End



PART NO. 157-047-000

## Cable Stop

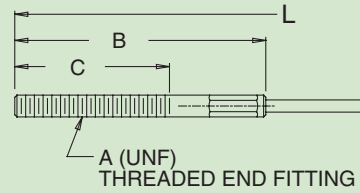


PART NO. BE 502

# Pull-Only Brake Specifications

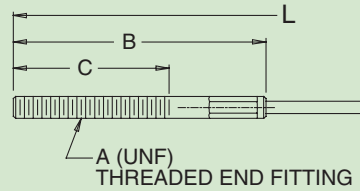
## 1500 Brake

Threaded End Fitting	A	B	C
TE504	5/16-24	3.70	2.22
TE504-006	5/16-24	2.08	.97
TE504-007	5/16-24	6.08	4.60
TE506	3/8-24	2.74	1.47
TE523-001	1/4-28	3.68	2.47



## 3000 Brake

Threaded End Fitting	A	B	C
TE505	3/8-24	2.95	2.00
TE505-1	3/8-24	1.88	1.00
TE508	3/8-24	2.62	1.50
TE509-1	3/8-24	4.95	3.75
TE510-1	5/16-24	2.50	1.50
TE510-2	5/16-24	3.62	2.24
TE510-4	5/16-24	4.00	3.00
TE510-5	1/4-28	3.62	2.50
TE510-6	5/16-24	2.12	1.00
TE510-7	5/16-24	2.88	1.50
TE510-8	5/16-24	5.60	4.47
TE510-9	5/16-24	3.00	1.91
TE605	3/8-24	6.00	5.00

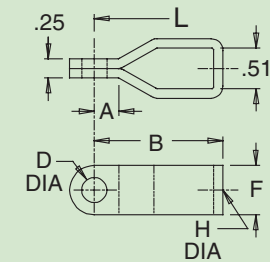
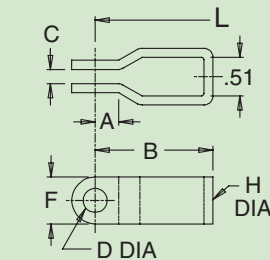
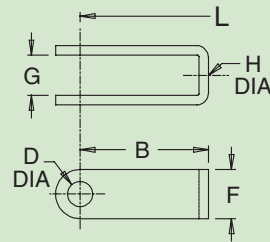


## Strap Clevis Part Numbers (For both 1500 and 3000 brake)

Open Strap Clevis	A	B	D	F	G	H
CS540	-	1.62	.31	.62	.43	.266
CS540-1	-	1.62	.31	.62	.51	.266
CS540-6	-	2.50	.38	.75	.57	.386
CS540-7	-	2.50	.31	.62	.51	.266
CS541	-	1.94	.38	.75	.51	.266
CS541-3	-	1.94	.38	.75	.51	.323
CS541-5	-	2.00	.38	.75	.51	.266
CS541-7	-	2.50	.38	.75	.51	.266
CS541-8	-	2.50	.38	.75	.51	.323
CS542*	-	1.08	.50	1.00	.58	.323

Step Strap Clevis	A	B	C	D	F	H
CS550	.31	1.56	.19	.31	.62	.266
CS550-1	.31	1.56	.19	.38	.62	.266
CS550-2	.31	1.56	.19	.31	.62	.316
CS550-4	.31	1.56	.19	.25	.62	.266
CS551	.38	1.75	.25	.31	.62	.266
CS551-1	.38	1.75	.25	.38	.62	.266
CS551-2	.75	2.38	.25	.31	.62	.316
CS551-3	.38	1.50	.25	.25	.62	.266
CS552	.31	2.38	.25	.31	.75	.266
CS552-1	.31	2.38	.25	.38	.75	.266
CS552-3	.38	2.38	.25	.43	.75	.316
CS552-4	.38	2.38	.25	.31	.75	.316
CS553	.50	1.88	.19	.38	.75	.266

Closed Strap Clevis	A	B	C	D	F	H
CS562	.31	1.62	-	.31	.62	.316
CS563	.28	1.75	-	.31	.62	.316
CS564	1.00	2.38	-	.38	.75	.316



\*use with 5/16 threaded end rod with nuts only

All line art dimensions are represented in inches

# Pull-Only Brake Order Code

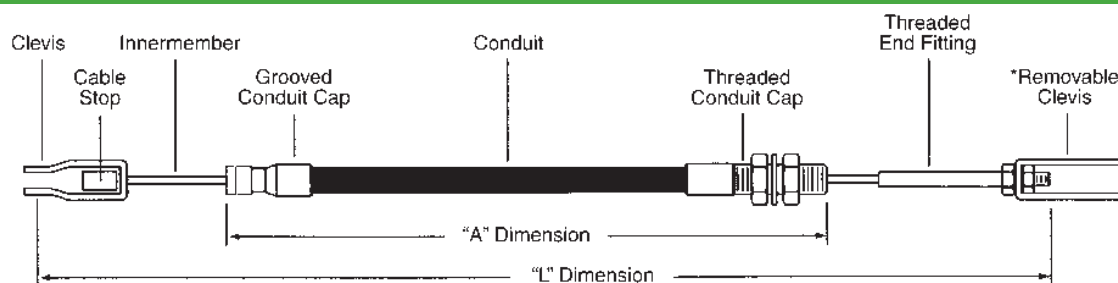
## Material

- Carbon Steel and Plastic

## Suggested End Fittings

- All 1500 & 3000lb Brake Cable Fittings
- Rod Ends
- Clevises

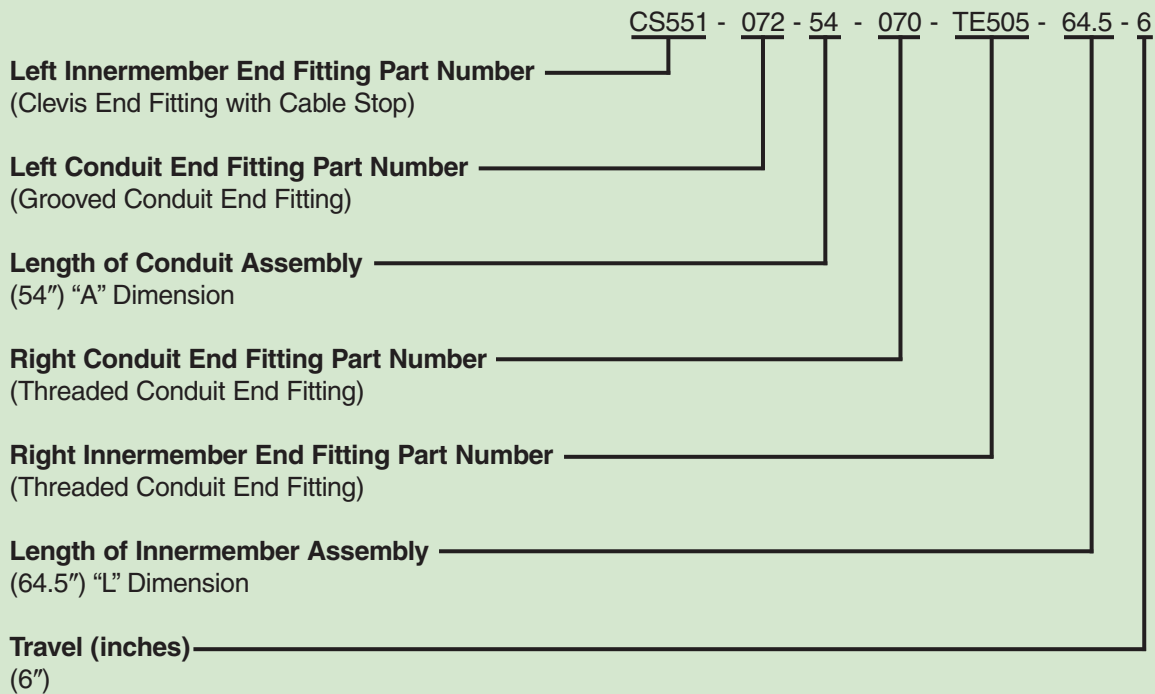
## Industrial Push-Only Brake



To specify a pull-only brake, the following information must be given in the order listed:

1. Left innermember end fitting part number.
  2. Left conduit end fitting part number.
  3. Length "A" between conduit fitting reference points in inches.
  4. Right conduit end fitting part number.
  5. Right innermember end fitting part number.
  6. Length "L" of innermember assembly between fitting reference points in inches.
  7. Travel of the innermember in the conduit in inches. (Note: dimensions "L" must be sufficiently greater than dimension "A" to allow desired travel).
- \*Removable items should be listed separately.

## Cablecraft® Ordering Codes



• Please refer to the cautions/warnings and appropriate installation usage information in the Technical/Application Data sheet  
 • For application assistance/technical questions, please contact us at the appropriate location listed below or through our website at [www.tuthillcontrols.com](http://www.tuthillcontrols.com)

Linking Motion  
& Control...  
The Tuthill  
Solution



4401 South Orchard Street  
Tacoma, Washington 98466 USA  
Tel 253 475-1080 Fax 253 474-1623

2110 Summit Street  
New Haven, Indiana USA 46774  
Tel 260 749-5105 Fax 260 493-2387  
[www.tuthillcontrols.com](http://www.tuthillcontrols.com)

Diplocks Way-South Road  
Hailsham, East Sussex BN27 3JF, England  
Tel 44 1323 841510 Fax 44 1323 845848

Hingbergstrasse 79  
45468 Mulheim an Der Rhur, Germany  
Tel 49-208-300-650 Fax 49-208-300-6550